

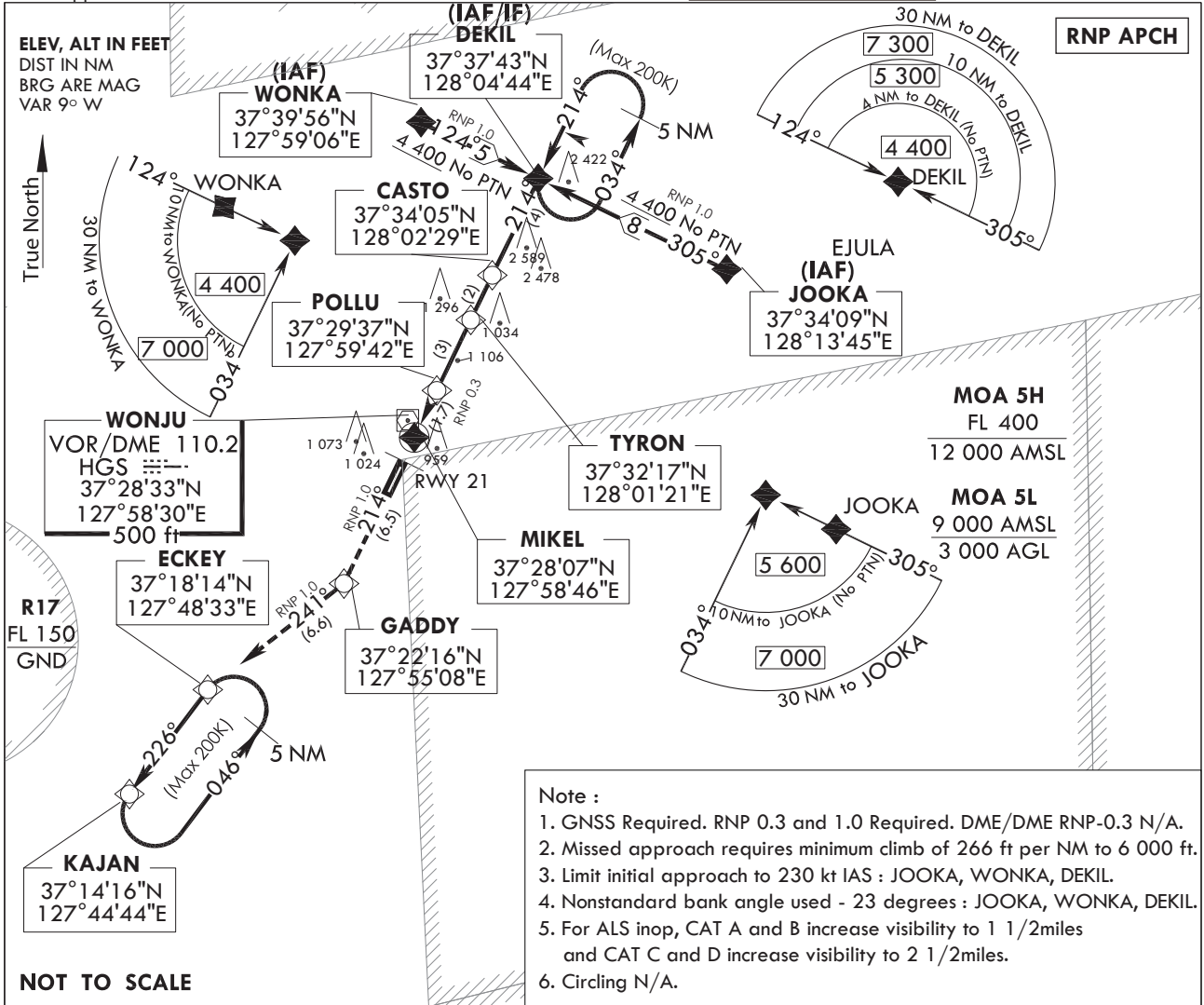
**INSTRUMENT
APPROACH
CHART**

AERODROME ELEV 330 ft
HEIGHTS RELATED TO
THR RWY 21 - ELEV 330 ft

| | |
|-----------|---------------|
| WONJU APP | 130.2 |
| | 234.4 255.0 |
| WONJU TWR | 126.2 118.325 |
| | 236.6 265.5 |

WONJU/wonju (RKNW)
RNP RWY 21

Note : Approach under U.S TERPS.



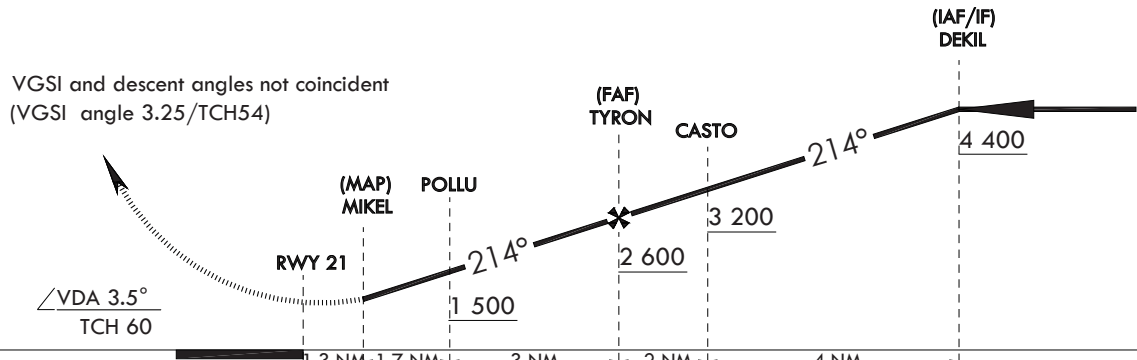
- Note :**
1. GNSS Required. RNP 0.3 and 1.0 Required. DME/DME RNP-0.3 N/A.
 2. Missed approach requires minimum climb of 266 ft per NM to 6 000 ft.
 3. Limit initial approach to 230 kt IAS : JOOKA, WONKA, DEKIL.
 4. Nonstandard bank angle used - 23 degrees : JOOKA, WONKA, DEKIL.
 5. For ALS inop, CAT A and B increase visibility to 1 1/2miles and CAT C and D increase visibility to 2 1/2miles.
 6. Circling N/A.

※ VGSi : Visual Glide Slope Indicator
VPA : Vertical Path Angle
TCH : Threshold Crossing Height
No PTN : No Procedure Turn Required

TRANSITION ALT 14 000
TRANSITION LVL FL 140

MISSED APPROACH
Climb to 6 000 ft on track 214° to GADDDY,
then track 241° to ECKEY, then track
226° to KAJAN and hold.

VGSi and descent angles not coincident
(VGSi angle 3.25/TCH54)



| CATEGORY | A | B | C | D |
|---------------|------------------------|-----|--------------------|---|
| LNNAV/VNAV DA | | | N/A | |
| LNNAV MDA | 1 200/60 870(900-11/8) | | 1 200-2 870(900-2) | |
| CIRCLING | | N/A | | |

Change : Information of MAG VAR(8° W → 9° W).

WONJU/wonju (RKNW)
IRNP RWY 21

AERONAUTICAL DATA TABULATION

INSTRUMENT APPROACH PROCEDURE CODING TABLES

RNP RWY 21

| Serial Number | Path Descriptor | Waypoint Identifier | Fly -Over | Course/Track ° M(° T) | Distance (NM) | Turn Direction | Altitude (ft) | Speed (kt) | Coordinates | VPA /TCH | Navigation specification | Remarks |
|---------------|-----------------|---------------------|-----------|-----------------------|---------------|----------------|---------------|------------|------------------------------|----------|--------------------------|---------|
| 001 | - | JOOKA | - | - | - | - | +5 600 | -230 | 37°34'08.84"N 128°13'45.27"E | - | RNPAPCH | IAF |
| 002 | TF | DEKIL | - | 305(296.5) | 8.0 | - | +4 400 | -230 | 37°37'42.86"N 128°04'44.26"E | - | RNPAPCH | IAF/IF |

RNP RWY 21

| Serial Number | Path Descriptor | Waypoint Identifier | Fly -Over | Course/Track ° M(° T) | Distance (NM) | Turn Direction | Altitude (ft) | Speed (kt) | Coordinates | VPA /TCH | Navigation specification | Remarks |
|---------------|-----------------|---------------------|-----------|-----------------------|---------------|----------------|---------------|------------|------------------------------|----------|--------------------------|---------|
| 001 | - | WONKA | - | - | - | - | +4 400 | -230 | 37°39'56.27"N 127°59'05.69"E | - | RNPAPCH | IAF |
| 002 | TF | DEKIL | - | 124(116.3) | 5.0 | - | +4 400 | -230 | 37°37'42.86"N 128°04'44.26"E | - | RNPAPCH | IAF/IF |
| 003 | TF | CASTO | - | 214(206.4) | 4.0 | - | +3 200 | -230 | 37°34'05.59"N 128°02'28.87"E | - | RNPAPCH | - |
| 004 | TF | TYRON | - | 214(206.4) | 2.0 | - | +2 600 | - | 37°32'16.91"N 128°01'21.18"E | - | RNPAPCH | FAF |
| 005 | TF | POLLU | - | 214(206.4) | 3.0 | - | +1 500 | - | 37°29'37.54"N 127°59'42.09"E | - | RNPAPCH | - |
| 006 | TF | MIKEL | FO | 214(206.4) | 1.7 | - | 1 200 | - | 37°28'06.75"N 127°58'45.69"E | - | RNPAPCH | MAP |

MISSED Approach

| Serial Number | Path Descriptor | Waypoint Identifier | Fly -Over | Course/Track ° M(° T) | Distance (NM) | Turn Direction | Altitude (ft) | Speed (kt) | Coordinates | VPA /TCH | Navigation specification | Remarks |
|---------------|-----------------|---------------------|-----------|-----------------------|---------------|----------------|---------------|------------|------------------------------|----------|--------------------------|--------------------------|
| 001 | TF | MIKEL | - | - | - | - | - | - | 37°28'06.75"N 127°58'45.69"E | - | RNPAPCH | MAP |
| 002 | TF | GADDY | - | 214(206.3) | 6.5 | - | - | - | 37°22'16.20"N 127°55'08.33"E | - | RNPAPCH | CG 266 ft/NM TO 6 000 ft |
| 003 | TF | ECKEY | - | 241(232.6) | 6.6 | - | - | - | 37°18'14.41"N 127°48'32.66"E | - | RNPAPCH | CG 266 ft/NM TO 6 000 ft |
| 004 | TF | KAJAN | - | 226(217.6) | 5.0 | - | 6 000 | - | 37°14'16.30"N 127°44'43.60"E | - | RNPAPCH | - |

HOLDING Data

| Serial Number | Path Descriptor | Waypoint Identifier | Fly -Over | Course/Track ° M(° T) | Distance (NM) | Turn Direction | Altitude (ft) | Speed (kt) | Coordinates | VPA /TCH | Navigation specification | Remarks |
|---------------|-----------------|---------------------|-----------|-----------------------|---------------|----------------|---------------|------------|------------------------------|----------|--------------------------|---|
| 001 | TF | DEKIL | - | 214(206.4) | 5.0 | L | 4 400 | -200 | 37°34'08.84"N 128°13'45.27"E | - | RNPAPCH | Hold at DEKIL NE left Turn 214° Inbound 5 NM Leg |
| 002 | TF | KAJAN | - | 226(217.6) | 5.0 | L | 6 000 | -200 | 37°37'42.86"N 128°04'44.26"E | - | RNPAPCH | Hold at KAJAN NE Left Turn 226° Inbound 5 NM Leg. |

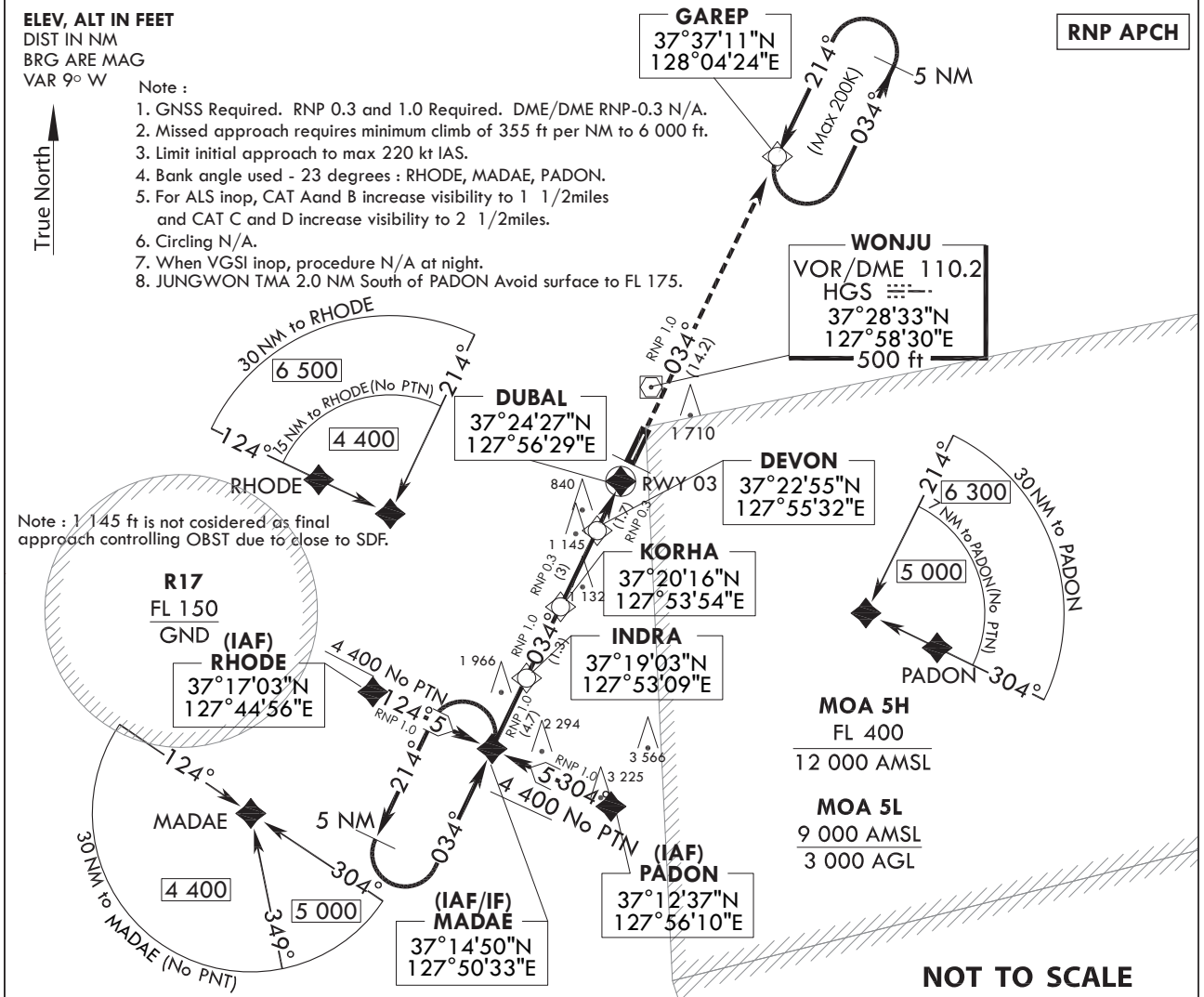
**INSTRUMENT
APPROACH
CHART**

AERODROME ELEV 330 ft
HEIGHTS RELATED TO
THR RWY 03 - ELEV 325 ft

| | |
|-----------|---------------|
| WONJU APP | 130.2 |
| | 234.4 255.0 |
| WONJU TWR | 126.2 118.325 |
| | 236.6 265.5 |

WONJU/wonju (RKNW)
RNP RWY 03

Note : Approach under U.S.TERPS.

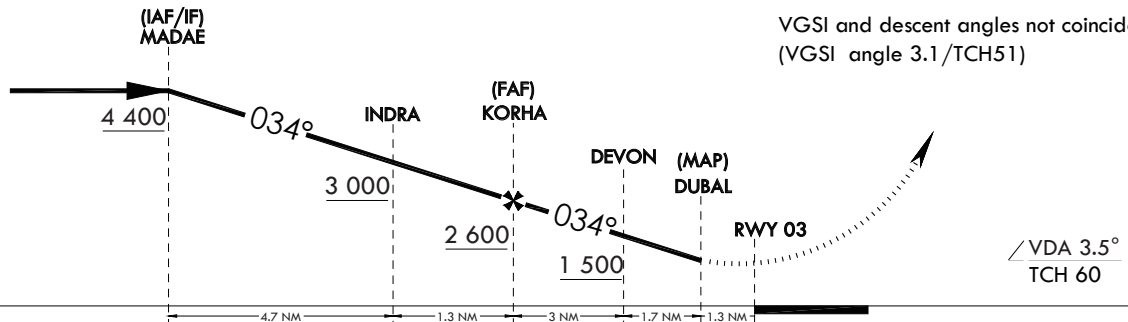


※ VGSI : Visual Glide Slope Indicator
VPA : Vertical Path Angle
TCH : Threshold Crossing Height
No PTN : No Procedure Turn Required

TRANSITION ALT 14 000
TRANSITION LVL FL 140

MISSED APPROACH

Climb to 6 000 ft on track 034° to GAREP and HOLD.



| CATEGORY | A | B | C | D |
|--------------|------------------------|---|--------------------------|---|
| RNAV/VNAV DA | | | N/A | |
| RNAV MDA | 1 160/60 835(900-11/8) | | 1 160-17/8 835(900-17/8) | |
| CIRCLING | | | N/A | |

Change : Information of MAG VAR(8° W → 9° W).

WONJU/wonju (RKNW)
RNP RWY 03

AERONAUTICAL DATA TABULATION

INSTRUMENT APPROACH PROCEDURE CODING TABLES

RNP RWY 03

| Serial Number | Path Descriptor | Waypoint Identifier | Fly -Over | Course/Track ° M(° T) | Distance (NM) | Turn Direction | Altitude (ft) | Speed (kt) | Coordinates | VPA /TCH | Navigation specification | Remarks |
|---------------|-----------------|---------------------|-----------|--------------------------|---------------|----------------|---------------|------------|------------------------------|----------|--------------------------|---------|
| 001 | - | RHODE | - | - | - | - | +4 400 | -220 | 37°17'03.21"N 127°44'55.61"E | - | RNPAPCH | IAF |
| 002 | TF | MADAE | - | 124(116.2) | 5.0 | - | +4 400 | -220 | 37°14'50.45"N 127°50'32.84"E | - | RNPAPCH | IAF/IF |

RNP RWY 03

| Serial Number | Path Descriptor | Waypoint Identifier | Fly -Over | Course/Track ° M(° T) | Distance (NM) | Turn Direction | Altitude (ft) | Speed (kt) | Coordinates | VPA /TCH | Navigation specification | Remarks |
|---------------|-----------------|---------------------|-----------|--------------------------|---------------|----------------|---------------|------------|------------------------------|----------|--------------------------|---------|
| 001 | - | PADON | - | - | - | - | +5 000 | -220 | 37°12'37.42"N 127°56'09.75"E | - | RNPAPCH | IAF |
| 002 | TF | MADAE | - | 304(296.3) | 5.0 | - | +4 400 | -220 | 37°14'50.45"N 127°50'32.84"E | - | RNPAPCH | IAF/IF |
| 003 | TF | INDRA | - | 034(026.3) | 4.7 | - | +3 000 | -220 | 37°19'03.51"N 127°53'09.14"E | - | RNPAPCH | - |
| 004 | TF | KORHA | - | 034(026.3) | 1.3 | - | +2 600 | - | 37°20'15.88"N 127°53'53.87"E | - | RNPAPCH | FAF |
| 005 | TF | DEVON | - | 034(026.3) | 3.0 | - | +1 500 | - | 37°22'55.32"N 127°55'32.56"E | - | RNPAPCH | - |
| 006 | TF | DUBAL | FO | 034(026.3) | 1.7 | - | 1 160 | - | 37°24'26.96"N 127°56'29.33"E | - | RNPAPCH | MAP |

MISSED Approach

| Serial Number | Path Descriptor | Waypoint Identifier | Fly -Over | Course/Track ° M(° T) | Distance (NM) | Turn Direction | Altitude (ft) | Speed (kt) | Coordinates | VPA /TCH | Navigation specification | Remarks |
|---------------|-----------------|---------------------|-----------|--------------------------|---------------|----------------|---------------|------------|------------------------------|----------|--------------------------|--------------------------|
| 001 | - | DUBAL | - | - | - | - | - | - | 37°24'26.96"N 127°56'29.33"E | - | RNPAPCH | MAP |
| 002 | TF | GAREP | - | 034(026.3) | 1.4.2 | - | +6 000 | - | 37°37'10.88"N 128°04'24.31"E | - | RNPAPCH | CG 355 ft/NM TO 6 000 ft |

HOLDING Data

| Serial Number | Path Descriptor | Waypoint Identifier | Fly -Over | Course/Track ° M(° T) | Distance (NM) | Turn Direction | Altitude (ft) | Speed (kt) | Coordinates | VPA /TCH | Navigation specification | Remarks |
|---------------|-----------------|---------------------|-----------|--------------------------|---------------|----------------|---------------|------------|------------------------------|----------|--------------------------|--|
| 001 | TF | MADAE | - | 034(026.3) | 5.0 | L | 4 400 | -200 | 37°14'50.45"N 127°50'32.84"E | - | RNPAPCH | Hold at MADAE SW left Turn 034° Inbound 5 NM Leg |
| 002 | TF | GAREP | - | 034(026.3) | 5.0 | L | 6 000 | -200 | 37°37'10.88"N 128°04'24.31"E | - | RNPAPCH | Hold at GAREP NE Left Turn 21.4° Inbound 5 NM Leg. |

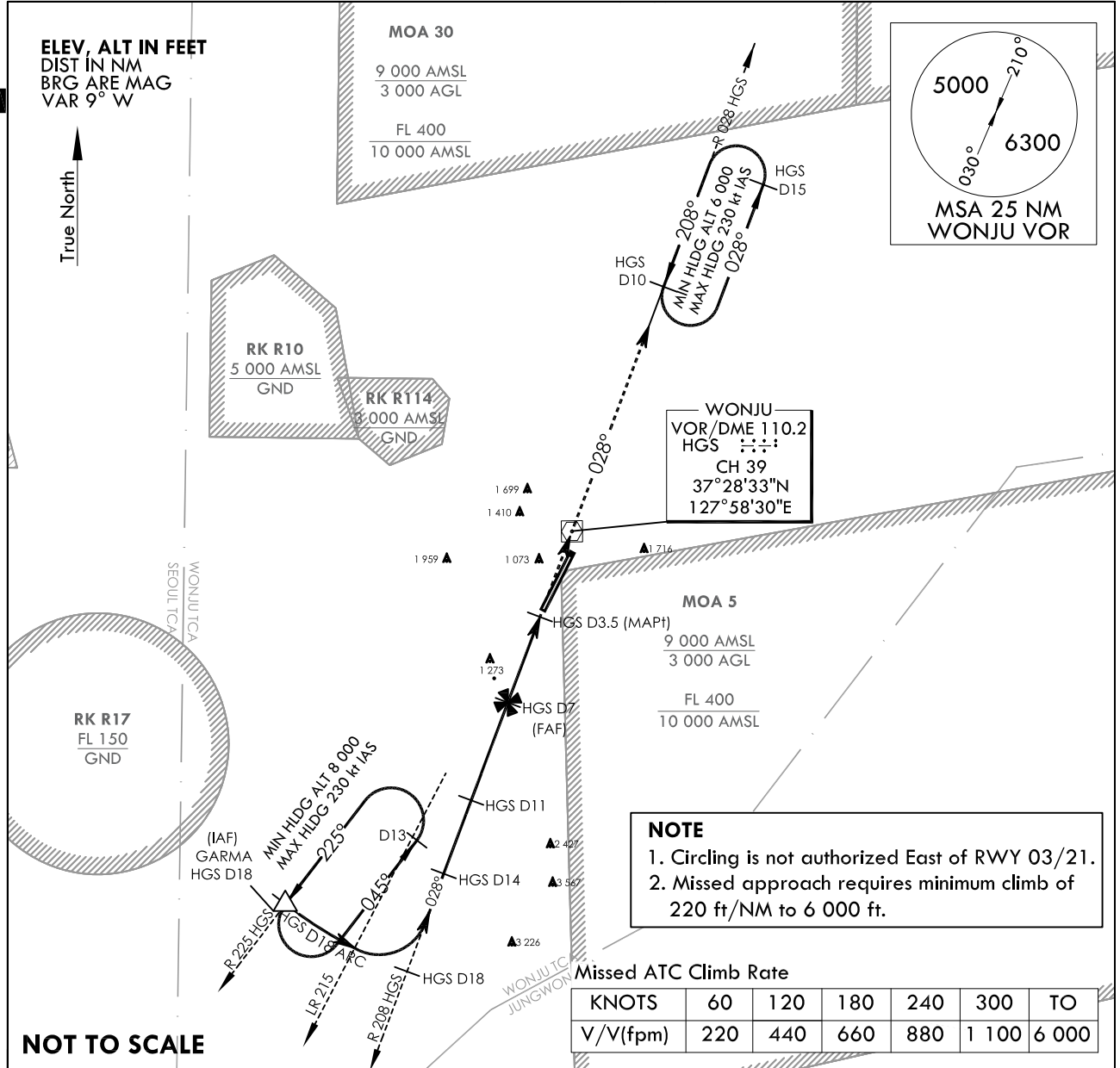
**INSTRUMENT
APPROACH
CHART**

AERODROME ELEV 330 ft
HEIGHTS ELEV TDZ 325 ft

| | | | |
|-----------|-------|---------|-------|
| WONJU APP | 130.2 | 234.4 | 255.0 |
| WONJU TWR | 265.5 | 118.325 | 236.6 |
| | 236.6 | 126.2 | |

**WONJU/Wonju (RKNW)
VOR/DME A**

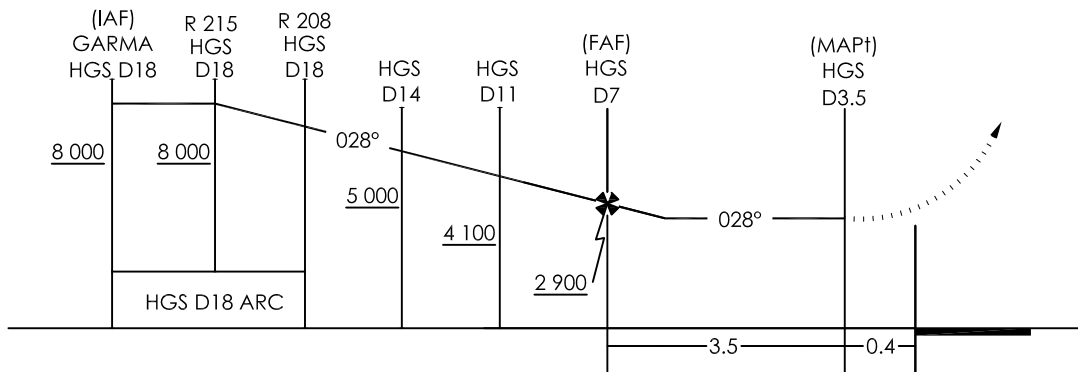
Note : Approach and circle to land under U.S. TERPS.



TRANSITION ALT 14 000
TRANSITION LVL FL 140

MISSED APPROACH

Climb to 6 000 ft via HDG 028° to HGS and R 028 HGS to HGS 10DME and hold, continue climb-in-hold to 6 000 ft.



| CATEGORY | A | B | C | D | E |
|-----------------|-----------------------------------|-----------------------------------|---------------------------|---------------------------|-----|
| CIRCLING | 1 540-1 1/4 1 210(1 300-1 1/4) | 1 540-1 1/4 1 210(1 300-1 1/2) | 1 780-3 1 450(1 500-3) | 2 060-3 1 730(1 800-3) | N/A |

* EXPANDED CIRCLING APPROACH MANEUVERING AIRSPACE RADIUS

Change : Information of MAG VAR(8° W → 9° W).

INTENTIONALLY

LEFT

BLANK